





# Nexcope®

Scientific  research microscope

SMARTER. FASTER. AUTOMATION.

Next generation research grade microscope designed for higher turnover.

  NEXCOPE IS ISO9001:2008 CERTIFIED  
NEXCOPE IS ISO14001:2004 CERTIFIED  
NEXCOPE IS ISO13485:2003 CERTIFIED

**Nexcope®**  
U.S.A

 **Illumins™**  
www.illumins.co.za  
info@illumins.co.za  
Tel: +27 21 100 3052

## AUTOMATION EFFICIENCY AND WIDE LENSES

The automated Nexcope series offers the newly acclaimed ultrawide 25mm view paired with electronic nose rotation and automatic light adjustment. It speeds up the diagnostic process by eliminating basic repetitive tasks and offers a big step to reducing labour costs as the single highest expense in companies.



NE930

AUTOMATIC MICROSCOPE



NE910

MANUAL MICROSCOPE



NE950

FLUORESCENT MICROSCOPE

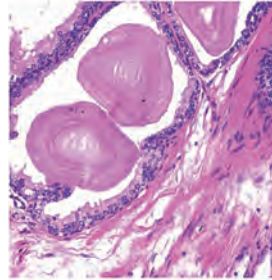
# HIGHLY EFFICIENT

Designed to keep eyes on the specimen using automated adjustments.



### AOS (auto objective switching)

Significantly reduce analysis times by electronically switching objectives. Simply click the up or down button while keeping your eyes on the specimen and your hands on the controls.

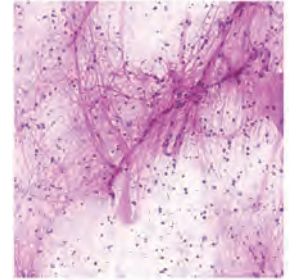


Prostate



### Intelligent flip down

When using low magnifications, the handsfree flip down condenser will automatically switch to the required setting.

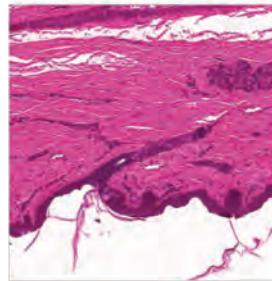


Isolated Neuron



### DOS (dual objective swop)

A single green button allows users to alternate between the two most used objectives.

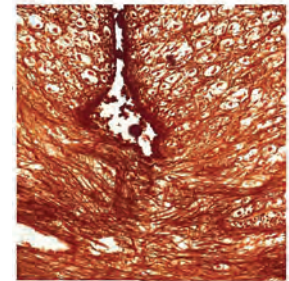


Eyelid



### One hand slide operation

Users can easily insert slides using one hand, due to the convex point guide mechanism.

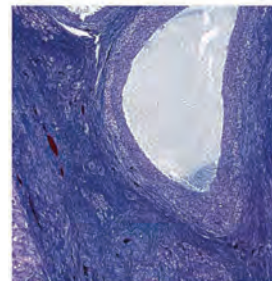


Synapse

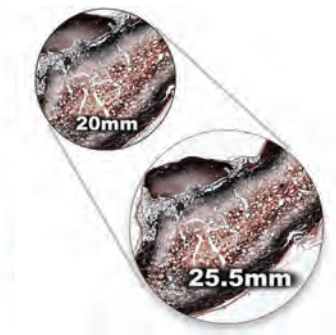


### Auto brightness level

Lumins Nexcope automatically maintains a constant brightness in the eyepiece, even when switching objectives. Eliminating time needed to adjust the brightness manually and decreasing eye fatigue.



Corpora Luteum



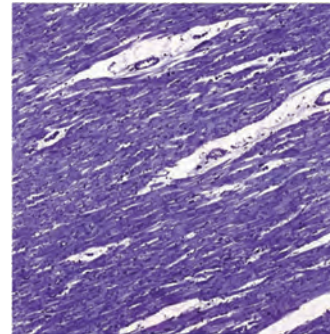
### New ultra wide 25mm search view

The newly acclaimed ultrawide 25mm viewing field allows users to reduce screening times with up to 15%. the range achieves 10% more clarity using premium Fluorescent grade APO-chromatic objects which allows more light to enter. The end result is a crystal clear and flat image which out performs standard PLAN objectives. \*

\* APO chromatic objectives is an optical upgrade

# ERGONOMIC

COMFORTABLE TO OPERATE

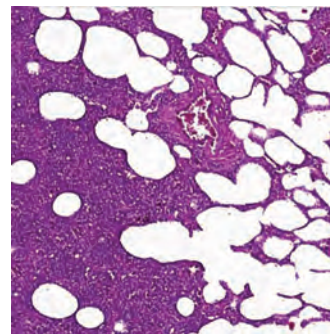


Cardiac Muscle



## Tilting head (+cam mount)

The tilting eye tube can adjust 0° - 35° to the preferred comfort level.

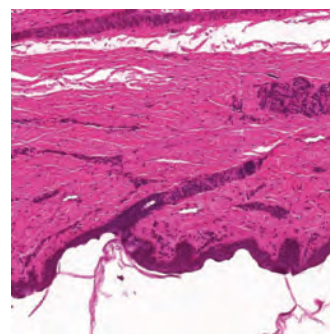


Pulmonary Miliary Tuberculosis



## Adjustable stage controls

The height of the stage control knobs can be adjusted up or down by 18mm to ensure comfortable hand position, and with adjustable tension control.



Eyelid

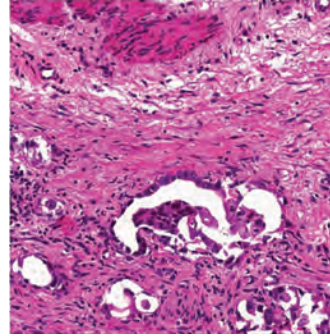


## Built-in image button

To capture a digital image, simply tap the built-in image capture button on the side. No need to use a computer mouse.

# NE900 SERIES

## STANDARD FEATURES INCLUDE

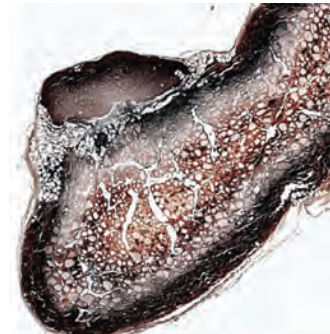


Gastric Adenocarcinoma



### ECO Function

The motion sensing Eco-illumination automatically turns off after a few minutes when it detects the user has left. Saving both energy and lamp life.

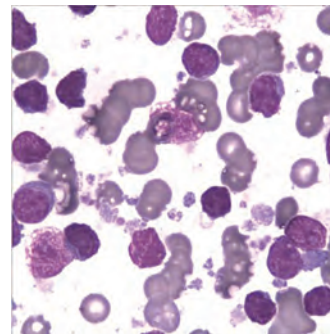


Thyroid Para follicular Cell



### Tempered Glass Stage

The sapphire crystal glass is strong, scratch resistant which lasts long. It comes in black and white, allowing the user to clearly view the outlines of the specimen. \*



Chronic Lymphocytic Leukemia



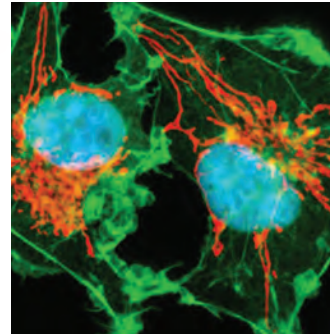
### 6 Objectives

As a standard, the Nexcope series microscopes can take up to 6 objectives.

\* NE910 Basic does not have an electronic nose

# NE950

## MODULAR FLUORESCENT DESIGN

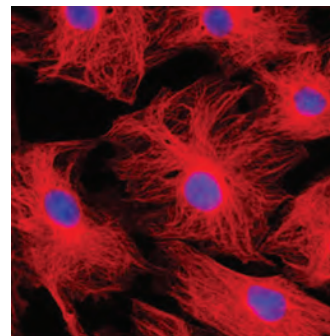


Gastric Adenocarcinoma Cell



### Fluorescent Viewing

All 6 filter blocks use high-performance filter lenses. Operators can view different stained specimens at the same time.

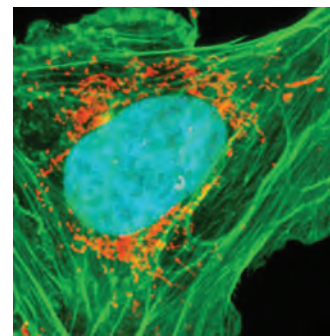


Thyroid Para follicular Cell



### Customise controls

Users can easily interchange the magnetically fixed fine focus knobs from one side to the other.



Chronic Lymphocytic Leukemia



### Light Intensity Management

Both the lower and upper LED light brightness is controlled and maintained electronically in the eyepiece, irrespective of the selected objective.

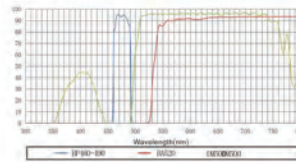
## HIGH-ACCURACY IMAGE

Highly-sensitive fluorescent testing can capture the bright and high-contrast image, even when a very small part of the cell is exposed under the exciting light. Advanced fluorescent technology can reduce diffusion light and autofluorescence to ensure high signal-to-noise result.

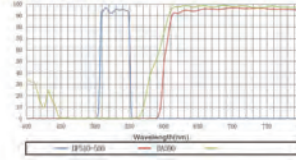


**Fluorescent Filter Blocks**  
Advanced coating technology  
Higher transmissivity  
Acuter barrier filter  
Higher testing results

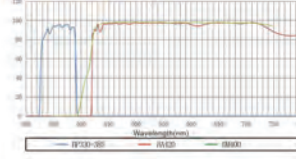
Blue Filter



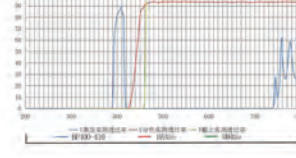
Green Filter



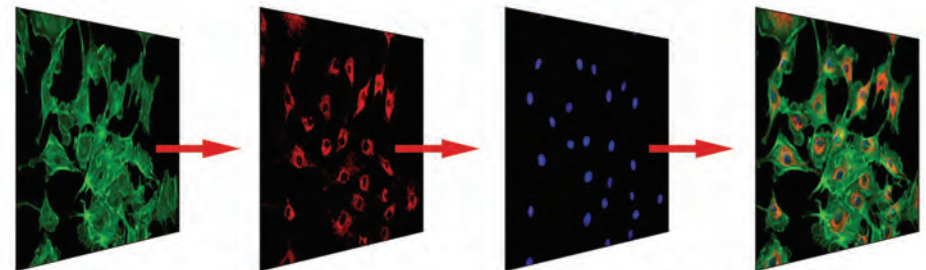
Ultraviolet Filter



Violet Filter



## HIGH PRECISION EASY OPERATION



## VARIOUS ACCESSORIES FOR CHOICE

### NIS60

#### N-PLN Series Plan Objectives

These plan objectives can provide flat image through the light from visible light to NIRS. They are usually used for bright-field viewing as the high signal-to-noise, high resolution and high contrast image result.



#### N-PLFN Series Plan Fluorescent Objectives

Owe to the multilayer coating technology, these S-APO objective can compensate the spherical aberration and the chromatic aberration from ultraviolet to infrared light. High-sensitive fluorescence ensure the acuity, articulation and color reduction of image, to provide the digital image of high-quality and high-function.



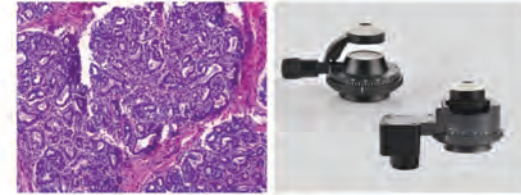
#### N-PLM PH Series Plan PH Objectives

They are the good choice for clinic and scientific research. These high-quality plan objective can provide advanced plan image of 25mm FOV under bright field & transmitted light. NIS60 series plan phase contrast objectives are specially designed for phase contrast viewing.



#### Bright-field Viewing

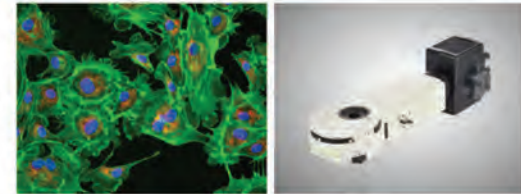
Brighter image, high resolution and flatness, suitable for all the magnifications.



Mammary Gland (active stage)

#### Fluorescent Viewing

The compact epi-fluorescent components includes noise elimination feature which ensures images captured are bright, with high contrast and high signal-to-noise ratio.



Arterial Cell

#### Phase Contrast Viewing

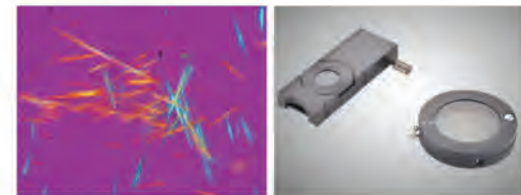
Operators can get high contrast image of neutral background color whatever the magnifications are. It is suitable for viewing non-stained specimen.



Rat Ovarian Cell

#### Polarizing Viewing

It is quite suitable for viewing collagen, amyloid and crystal etc. double refracting specimen.



Uric Acid Crystal

#### Dark-field Viewing

It can be used for clearly viewing of blood or flagellum etc. fine structure.



Spirogyra



## MULTI-VIEWING SYSTEM



2-Head F2F Multi-viewing Microscope

Multi-viewing system has very high value on laboratory training and teaching. We provide different kinds of choices, with viewing heads and built-in LED pointer, maximum 10 persons can view the same specimen meanwhile, and without light intensity loss.



2-Head S2S Multi-viewing Microscope



5-Head Multi-viewing Microscope

### NE910 Specifications

Optical System	NIS60 Infinite Optical System		
Eyeiece	·SW10X/25 ·EW12.5X/17.5	·SW10X/22 ·WF15X/16	·WF20X/12
Viewing Head	·Seidentopf Trinocular Head, Inclined at 30°, Interpupillary Distance 47-78mm ·Seidentopf Binocular Head, Inclined at 30°, Interpupillary Distance 47-78mm ·Ergo Tilting Trinocular Head, adjustable from 0° to 35°, Interpupillary Distance 47-78mm		
Objective	·N-PLN Plan Objective ·N-PLN PH Phase Contrast Objective		
Nosepiece	Sextuple Nosepiece		
Condenser	Swing Condenser N.A. 0.9/0.25 ·Turret Phase Contrast Condenser ·Dark-field Condenser(Dry) ·Dark-field Condenser(Oil)		
Illumination	·12V/100W Halogen Lamp ·3W S-LED Lamp		
Focusing	Coaxial Coarse and Fine Adjustment, Fine Division 1um, Moving Range 35mm		
Stage	·Double Layer Mechanical Stage 190X/152/ 78mmX32mm (Right or Left Handle) ·Double Layer Mechanical Stage 190X152/ 78mmX54mm (Right or Left Handle)		
Accessories	Power Cord Cedar Oil		

### NE930 Specifications

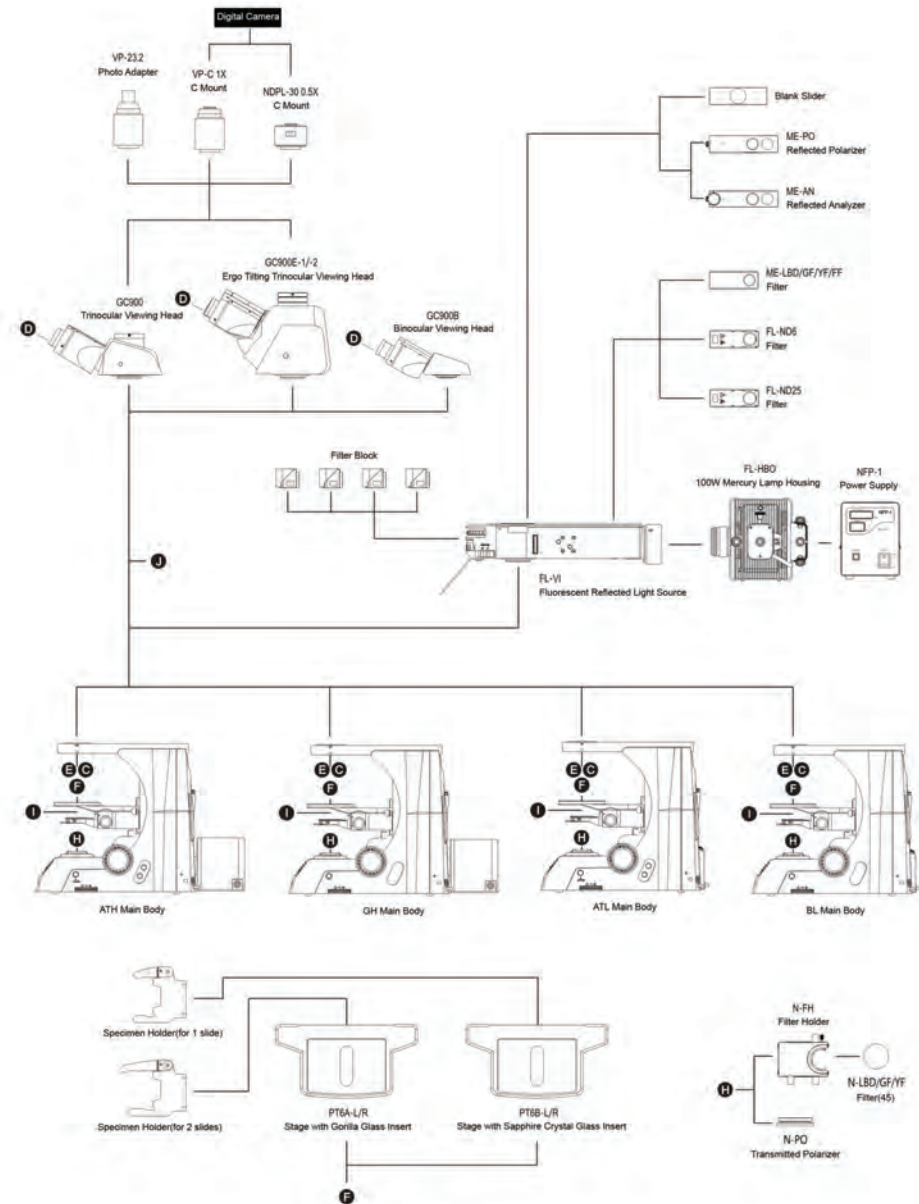
Optical System	NIS60 Infinite Optical System		
Eyeiece	·SW10X/25 ·EW12.5X/17.5	·SW10X/22 ·WF15X/16	·WF20X/12
Viewing Head	·Ergo Tilting Trinocular Head, adjustable from 0° to 35°, Interpupillary Distance 47-78mm ·Seidentopf Trinocular Head, Inclined at 30°, Interpupillary Distance 47-78mm ·Seidentopf Binocular Head, Inclined at 30°, Interpupillary Distance 47-78mm		
Objective	·N-PLN Plan Objective ·N-PLN PH Phase Contrast Objective		
Nosepiece	Auto Sextuple Nosepiece		
Condenser	Swing Condenser N.A. 0.9/0.25 (Auto) ·Turret Phase Contrast Condenser ·Dark-field Condenser(Dry) ·Dark-field Condenser(Oil)		
Illumination	·12V/100W Halogen Lamp ·3W S-LED Lamp		
Focusing	Coaxial Coarse and Fine Adjustment, Fine Division 1um, Moving Range 35mm		
Stage	·Double Layer Mechanical Stage 190X/152/ 78mmX32mm (Right or Left Handle), with Sapphire Crystal Glass Insert ·Double Layer Mechanical Stage 190X152/ 78mmX54mm (Right or Left Handle)		
Accessories	Scopeimage 10.0 Software Power Cord Cedar Oil		

### NE950 Specifications

Optical System	NIS60 Infinite Optical System		
Eyeiece	·SW10X/22 ·EW12.5X/17.5	·SW10X/25 ·WF15X/16	·WF20X/12
Viewing Head	·Ergo Tilting Trinocular Head, adjustable from 0° to 35°, Interpupillary Distance 47-78mm ·Seidentopf Trinocular Head, Inclined at 30°, Interpupillary Distance 47-78mm ·Seidentopf Binocular Head, Inclined at 30°, Interpupillary Distance 47-78mm		
Objective	·N-PLFN Fluorescent Objective ·N-PLN Plan Objective ·N-PLN PH Phase Contrast Objective		
Nosepiece	Auto Sextuple Nosepiece		
Condenser	Swing Condenser N.A. 0.9/0.25 (Auto) ·Turret Phase Contrast Condenser ·Dark-field Condenser(Dry) ·Dark-field Condenser(Oil)		
Illumination	·12V/100W Halogen Lamp ·3W S-LED Lamp		
Focusing	Coaxial Coarse and Fine Adjustment, Fine Division 1um, Moving Range 35mm		
Stage	·Double Layer Mechanical Stage 190X/152/ 78mmX32mm (Right or Left Handle), with Sapphire Crystal Glass Insert ·Double Layer Mechanical Stage 190X152/ 78mmX54mm (Right or Left Handle)		
Accessories	Neximage 10.0 Software Power Cord Cedar Oil		
Epi-fluorescent Attachment	Illuminator 100W Mercury Lamp	·Reflected Light Source with B and G Filters ·Turret with 6 Filter Block Cubes, U, V Filters ·Centering Adjustable, ND6/ ND25 Filter	

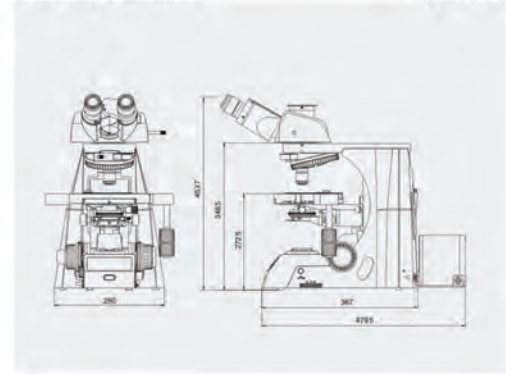
Note: the first item is the standard, customers can choose different specifications according to demands.

■ NE900 System Diagram



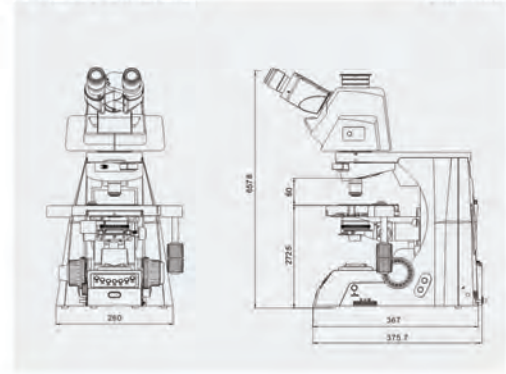
■ NE910 Dimension

Unit: mm



■ NE930 Dimension

Unit: mm



■ NE950 Dimension

Unit: mm

